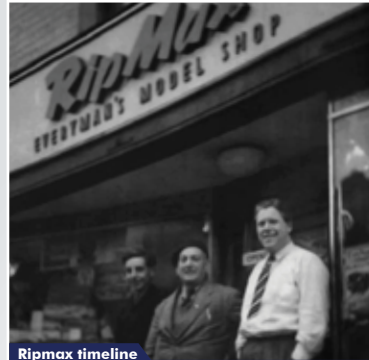


# Ripmax

BUYS



# hpi-racing



Ripmax timeline

1949 Ripmax was founded by Arthur Rippon and Max Coote.

## WHAT YOU NEED TO KNOW

- Ripmax are based in the UK
- Leading European supplier to model and hobby trade
- RC specialist
- Largest Futaba distributor in the EU
- Track history of successful acquisitions



1972

UK's largest RC distributor

2003

Merge with Irvine Ltd.

2013

EU Futaba distributor

FUTURE

Global Market Leader

AIR

LAND

SEA

RADIO

FYI

In 2013 Ripmax purchased UK importer of cool brands like ...bringing them out of administration and back to great health!

## WHAT ATTRACTED RIPMAX



## TO PURCHASE HPI RACING?

- 30 year design heritage
- Industry leading innovation
- Leading producer of RC licensed replicas
- Well established global distribution network



HPI HAS PRODUCED REPLICAS OF THESE BRANDS AND MORE!

## SO WHAT DOES THE FUTURE HOLD FOR HPI RACING?

- Re-established HPI DNA
- Continued innovation
- Improved parts supply
- Improved customer service
- Same great HPI!
- Continuous improvements



## STILL TO COME

These highly anticipated HPI products will land later in the year...



## TWO NEW COMPANIES



HPI RACING DESIGN LLC.

Retaining core HPI DNA with dedicated R&D facility in Southern California



HPI RACING LTD.

Global trading from UK premises in Derbyshire

WHERE SHOULD I BUY HPI NOW?

Our distribution network will remain the same! So check back at your usual shop, website or distributor. They will have many more HPI Products in stock soon!

WWW.HPIRACING.WORLD