

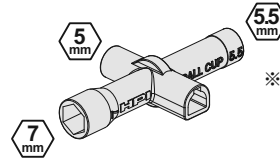
160430 FIXED GEAR ADAPTER SET

Equipment Needed
Benötigtes Zubehör
Équipement nécessaire
 必要な工具

※ **Not Included**
Nicht enthalten
Non inclus
 別売り

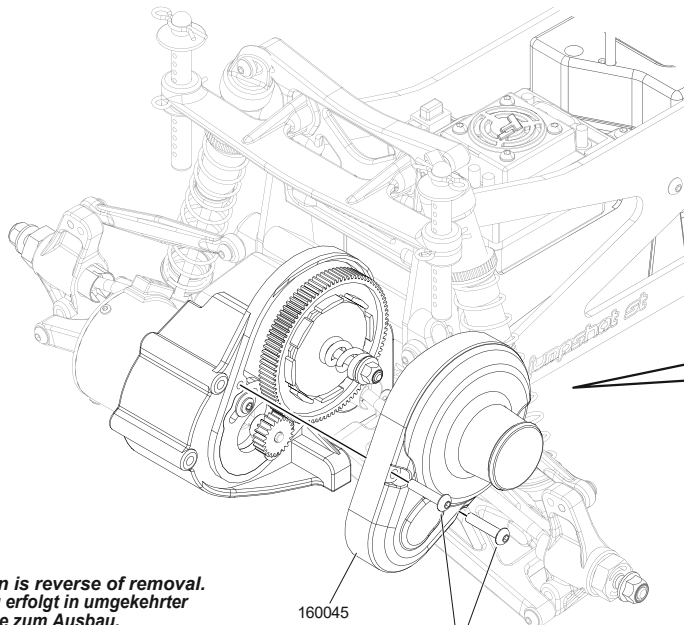
※ **Allen Wrench**
Inbusschlüssel
Clé Allen
 六角レンチ

1.5mm Z901 2mm Z904



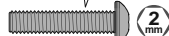
※ **Z950**
Cross Wrench
Kreuzschlüssel
Clé en croix
 ミニクロスレンチ

1



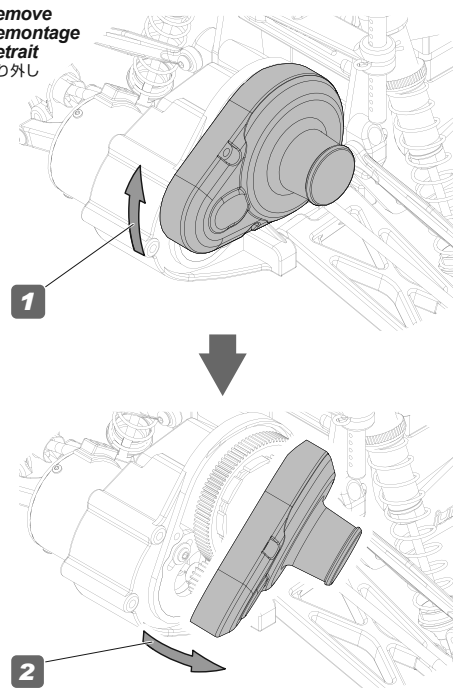
Installation is reverse of removal.
Der Einbau erfolgt in umgekehrter Reihenfolge zum Ausbau.
L'ordre d'installation est inverse de l'ordre de démontage.
 組み立ては逆の手順で図を参考にしてください。

160045

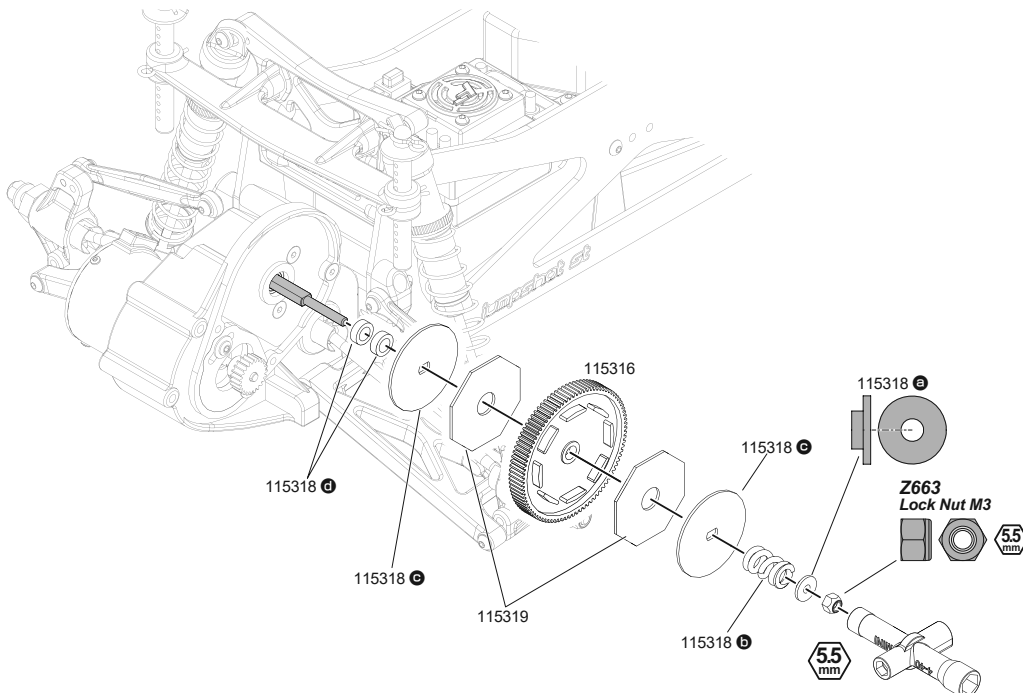


100559
Button Head Screw M3x14mm

Remove
Demontage
Retrait
 取り外し



2



115318 ④

115318 ③

115319

115316

115318 ⑤

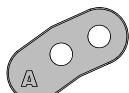
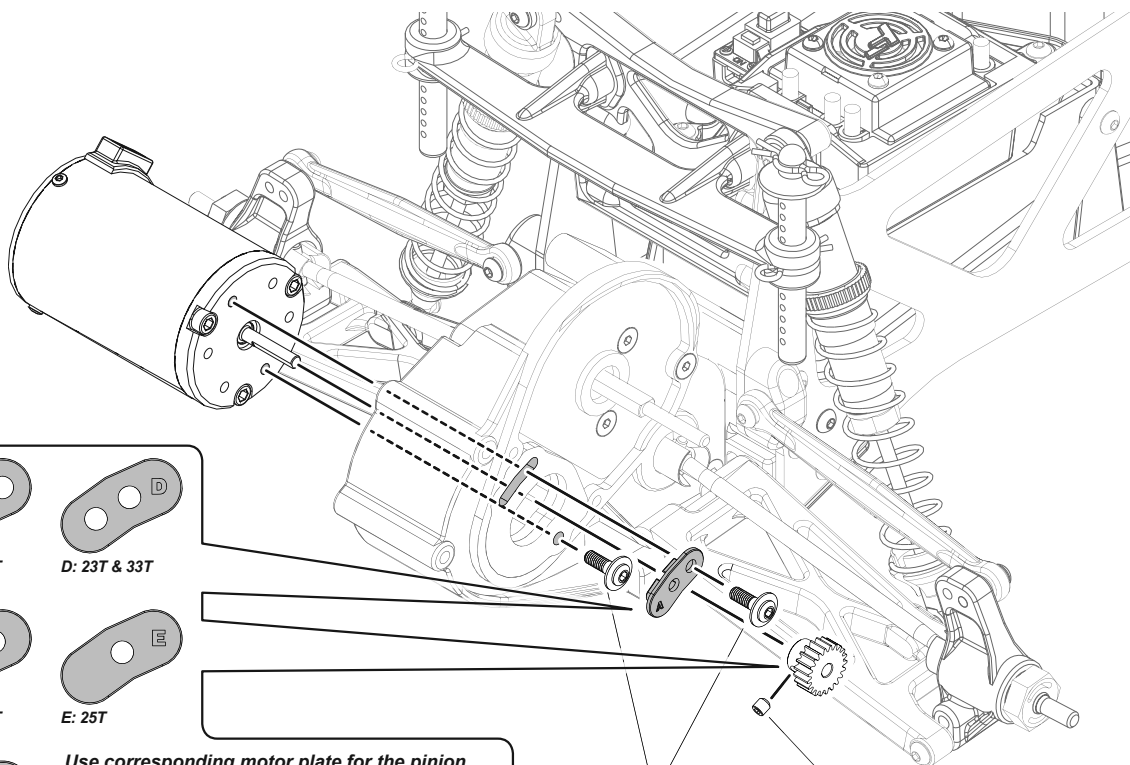
115318 ⑥

Z663
Lock Nut M3

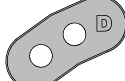
5.5mm

5.5mm

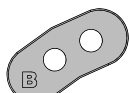
3



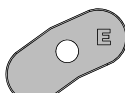
A: 17T & 27T



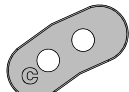
D: 23T & 33T



B: 19T & 29T



E: 25T



C: 21T & 31T

Use corresponding motor plate for the pinion gear you are using.
 Verwenden Sie die zum Ritzel passende Motorplatte.
 Utilisez la plaque moteur correspondante au pignon que vous utilisez.
 ピニオンギアの歯数にあわせてモータープレートを選択してモーターを取り付けます。

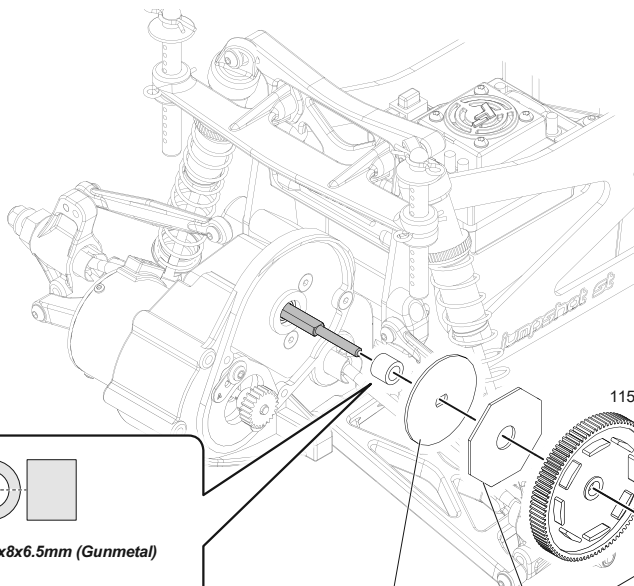


115323
Motor Screw M3x9mm



Z700
Set Screw M3x3mm

4



160065
Spacer 5x8x6.5mm (Gunmetal)

Use correct size
 Verwenden Sie die korrekte Größe
 Utilisez la taille adéquate
 ●正しいサイズを使用してください

115318 ●

115319

115316

115318 ●

115318 ●

Z663
Lock Nut M3

5.5mm

115318 ●

5.5mm



HPI RACING A/S
 www.hpiracing.com
 HPI Racing A/S
 Jegindøvej 21
 DK - 8800 Viborg
 Denmark
 Email: info@hpiracing.com