

# FUELIE 23 v2

Horsepower

Maximum RPM

Displacement

Carburetor

Construction

2.9hp

15,000rpm

1.5cu in, 25.4cc

12.7mm

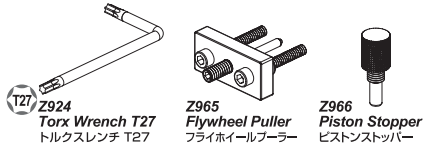
Aluminum



#15406 Fuelie 23 Engine 2.0

- Aluminum construction
- Engine stop switch
- NGK CMR7H spark plug
- Mixed fuel of gasoline and two-stroke oil: ratio 25:1
- Built-in cooling fan
- 2 needle carburetor with idle adjustment

## Option Tools オプションツール



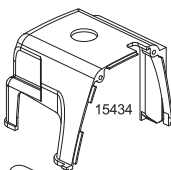
**Z924**  
Torx Wrench T27  
トルクスレンチ T27

**Z965**  
Flywheel Puller  
フライホイールプーラー

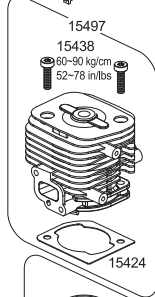
**Z966**  
Piston Stopper  
ピストンストッパー



**15454**  
110~170 kg/cm  
96~148 in/lbs



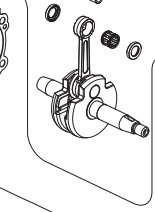
15434



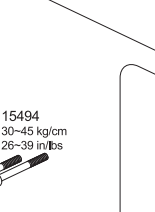
**15438**  
60~90 kg/cm  
52~78 in/lbs



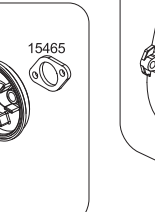
15424



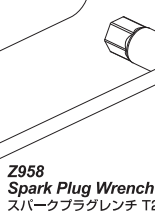
15420



15427

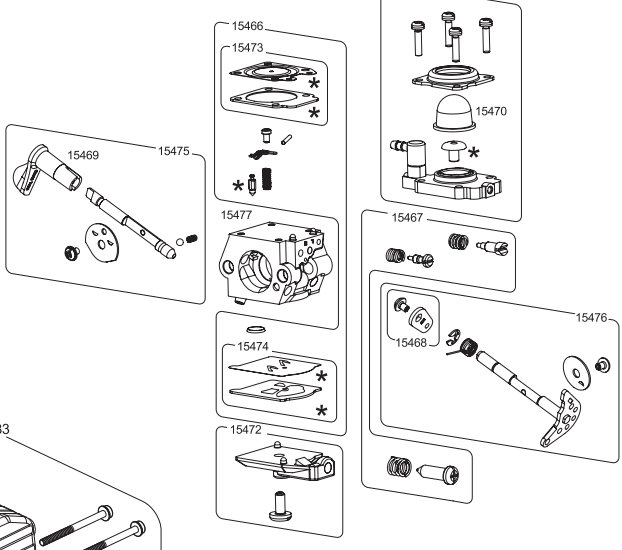


15428



15429

## 15460 (WT668) CARBURETOR



**15483**



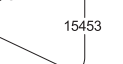
**15481**



**15450**



**15496**  
40~60 kg/cm  
35~52 in/lbs



**15451**



**15453**



**15426**



**15430**



**15432**



**15439**  
60~90 kg/cm  
52~78 in/lbs



**15495**

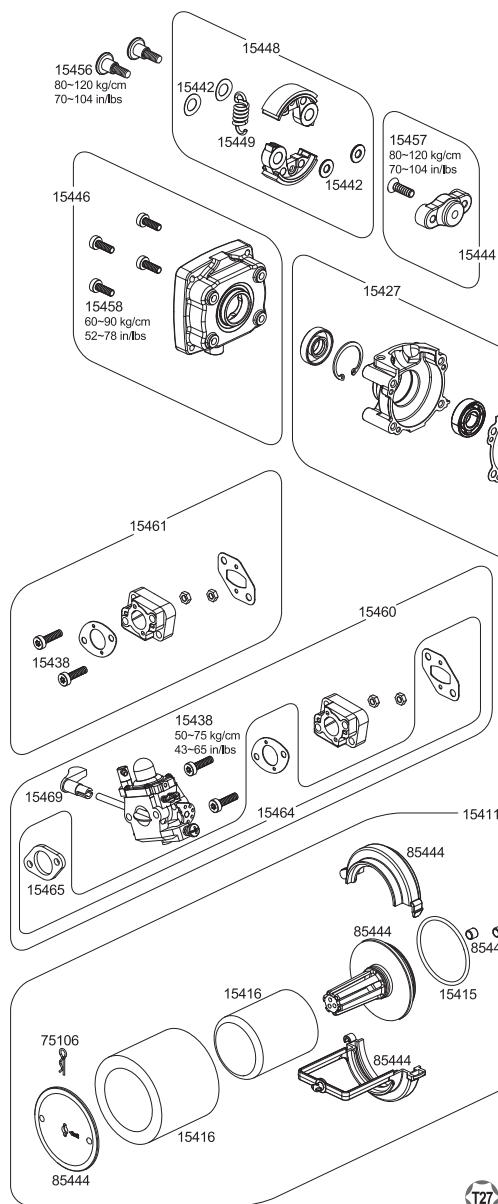


**15438**



**15478**

**!** When rebuilding, always use new parts.  
交換時は新品にしてください。



**Z958**  
Spark Plug Wrench T27 (16mm)  
スパークプラグレンチ T27 (16mm)